

Inovance H5U Series (Ethernet)

Supported Series: Inovance H5U Series

Website: <http://www.inovance.cn/>

HMI Setting:

Parameters	Recommended	Options	Notes
PLC type	Inovance H5U Series (Ethernet)		
PLC I/F	Ethernet		
Port no.	12939		

Device Address:

Bit/Word	Device type	Format	Range	Memo
B	UB	HHHHHHHH	0 ~ 4C4B400	
B	UM	HHHHHHHH	0 ~ 4C4B400	

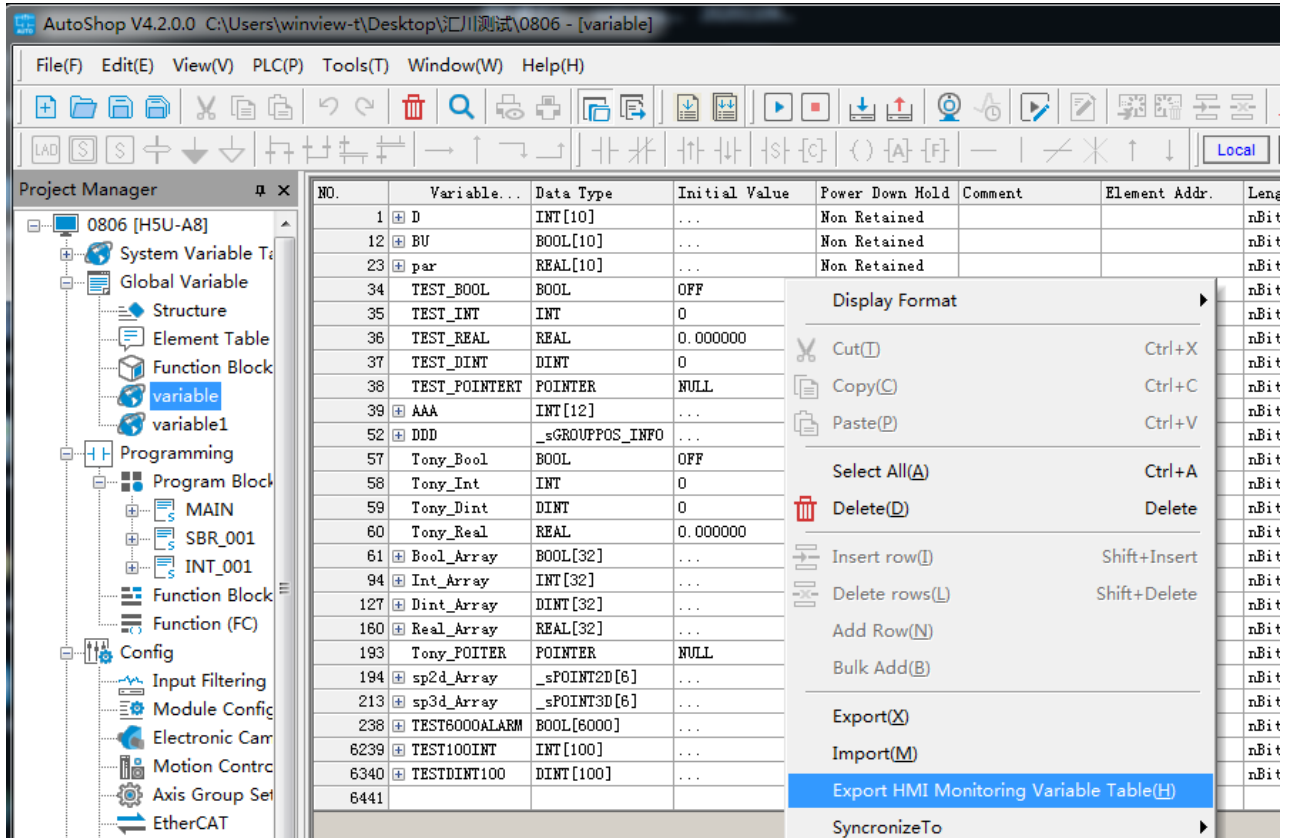
Support Device Type:

S7-1500 data type	EasyBuilder data format	Memo
Bool	bit	
Int	16-bit BCD, Hex, Binary, Signed	16-bit
DInt	16-bit BCD, Hex, Binary, Signed	32-bit
Real	32-bit Float	32-bit
Array		Bool, Int, DInt, Real

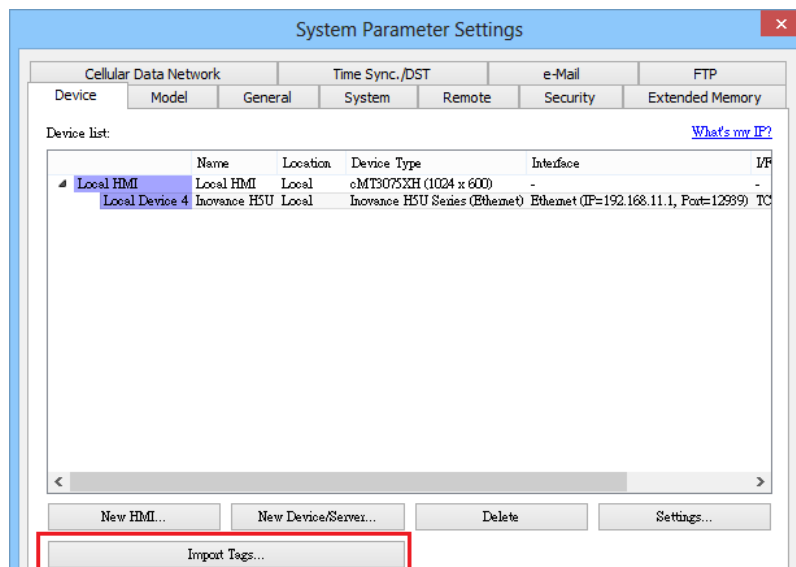
Import Tags

1.The following instructions use the software as: AutoShop V4.2.0.0

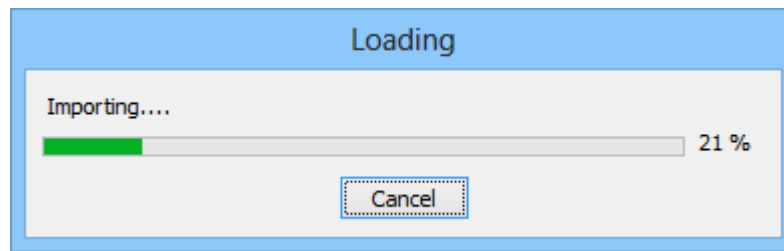
Variable -> Right click -> Export HMI Monitoring Variable Table -> Save CSV File



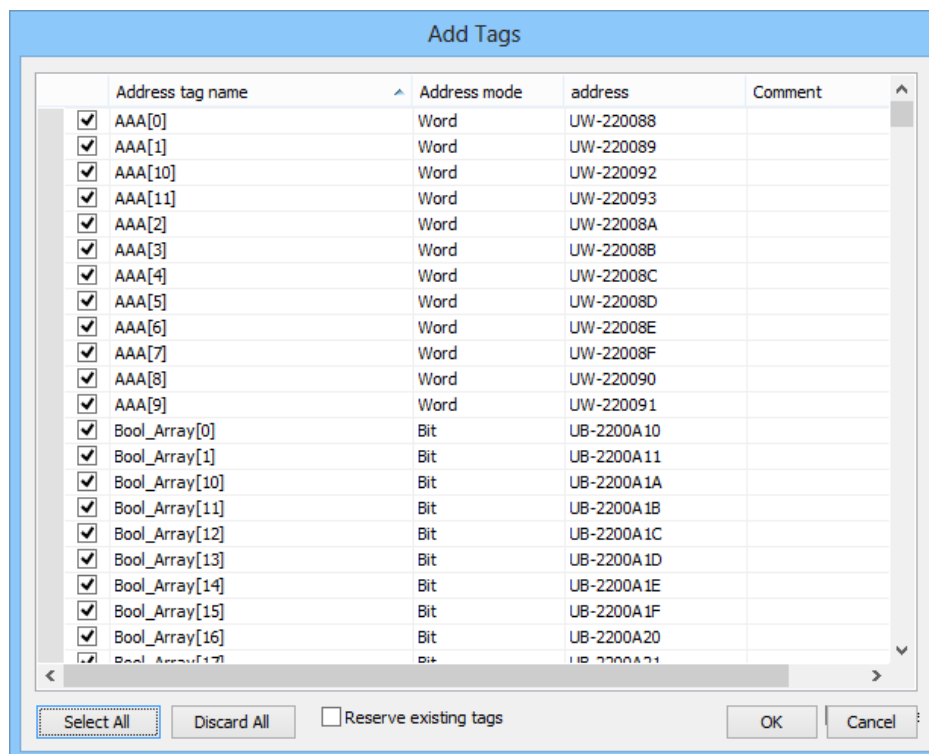
2. EasyBuilder Pro -> System Parameter Settings -> Import Tags (CSV)



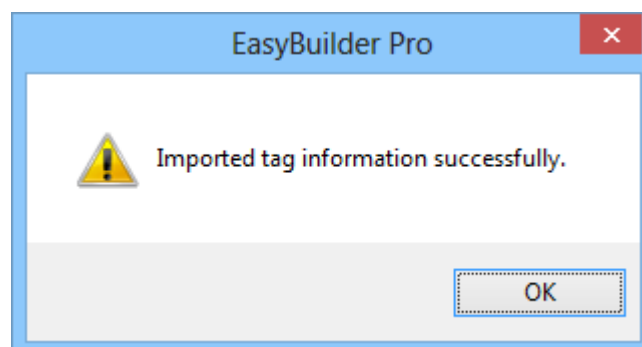
3. Loading



4. Select the imported tag -> OK



5. Imported tag information successfully.



Wiring Diagram:

Ethernet cable:

